

# Hepatitis C Newly Reported Cases<sup>1</sup> New York Long Island Region, 2019



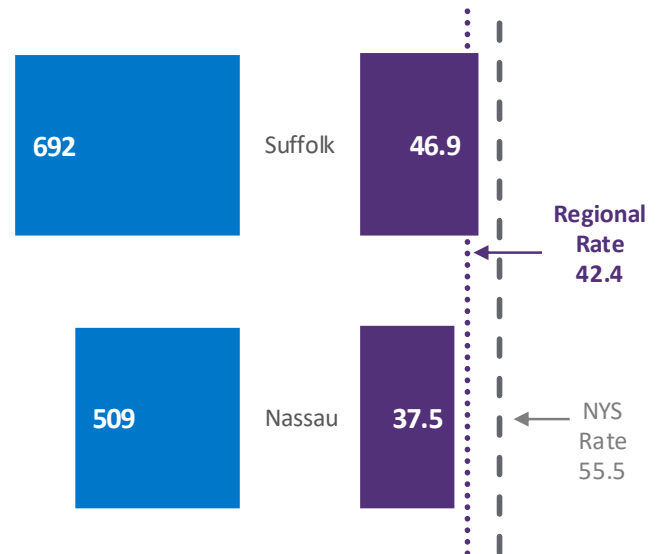
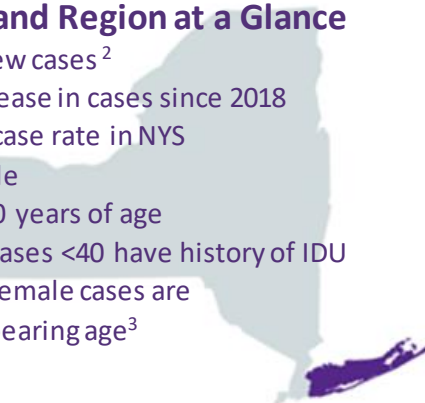
Department of Health

Hepatitis C is a viral infection that affects the liver. It is the most common bloodborne infection and reason for liver transplant, one of the leading causes of liver cancer, and a major cause of infectious disease-related death in the United States. Current medications cure over 90% of individuals.

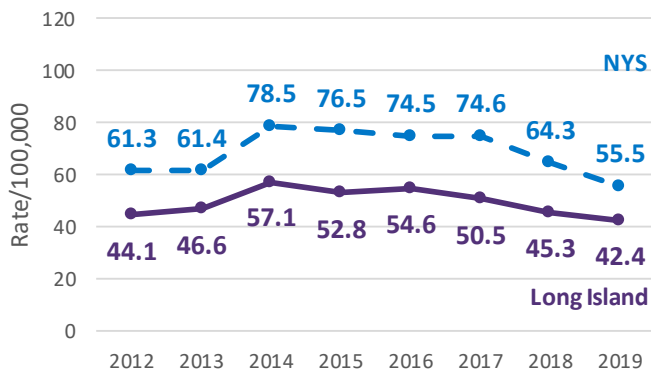
In 2019, Suffolk County had largest **number of cases** and highest **case rates per 100,000** on Long Island.<sup>4</sup>

## Long Island Region at a Glance

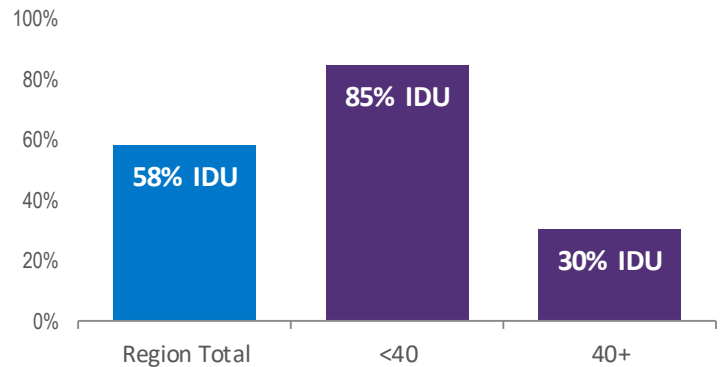
- 1,201 new cases<sup>2</sup>
- 7% decrease in cases since 2018
- Lowest case rate in NYS
- 58% male
- 36% <40 years of age
- 85% of cases <40 have history of IDU
- 43% of female cases are of childbearing age<sup>3</sup>



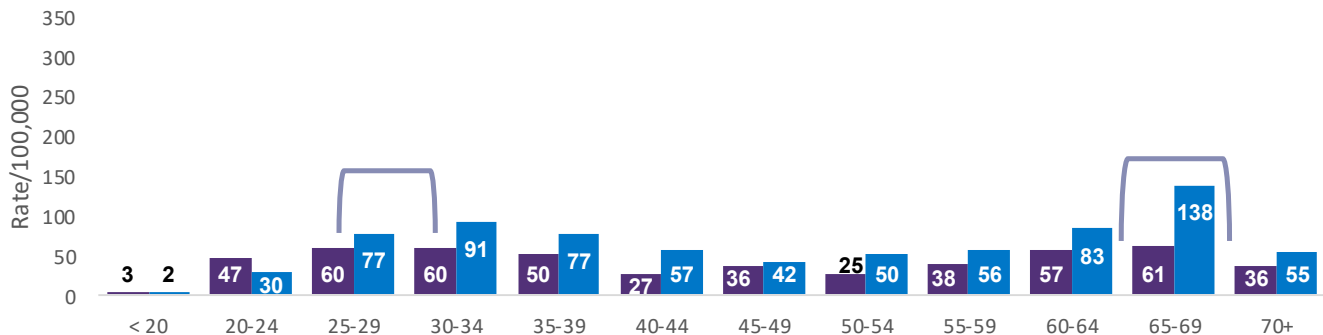
Case rates in the **Long Island** region decreased in 2019 and were lower than rates in **New York State (excluding NYC)**.



Injection drug use (IDU) is a major risk factor for hepatitis C. When risk factor information was available, **58% of total** newly reported cases had a history of IDU. IDU was **more common among those <40 years of age than those 40+.**<sup>5</sup>



Hepatitis C case rates per 100,000 in the Long Island region were highest for **females** in the 25-34 and 65-69 age groups and **males** aged 65-69.



**Notes.** <sup>1</sup> Reports include both probable and confirmed, chronic, acute, and perinatal hepatitis C cases; <sup>2</sup> Rates in counties and regions exclude persons incarcerated by the Department of Corrections and Community Supervision <sup>3</sup> Women of childbearing include women age 15 to 44. <sup>4</sup> Data includes all counties outside of New York City (Bronx, Kings, Queens, New York, and Richmond Counties). <sup>5</sup> Information on IDU was unknown for 79% of all cases. For more information see New York State Department of Health Hepatitis B and C Annual Report 2019 at <https://www.health.ny.gov/statistics/diseases/communicable/>. **Source.** Communicable Disease Electronic Surveillance System (CDESS)

**Contact.** NYSDOH Division of Epidemiology, [hepbc.surveillance@health.ny.gov](mailto:hepbc.surveillance@health.ny.gov)

