

Hepatitis C Newly Reported Cases¹ New York Western Region, 2019



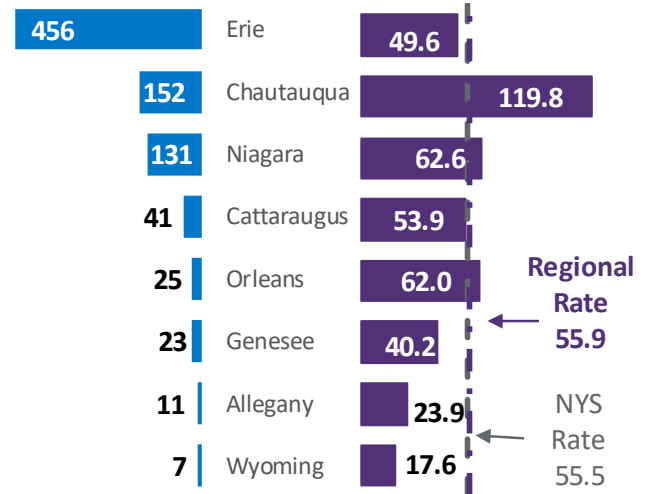
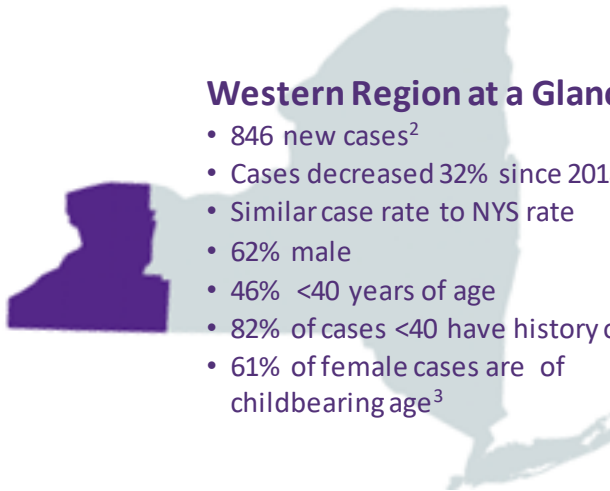
Department of Health

Hepatitis C is a viral infection that affects the liver. It is the most common bloodborne infection and reason for liver transplant, one of the leading causes of liver cancer, and a major cause of infectious disease-related death in the United States. Current medications cure over 90% of individuals.

In 2019, Erie County had largest **number of cases** in the Western region. **Case rates per 100,000** were highest in Chautauqua County.⁴

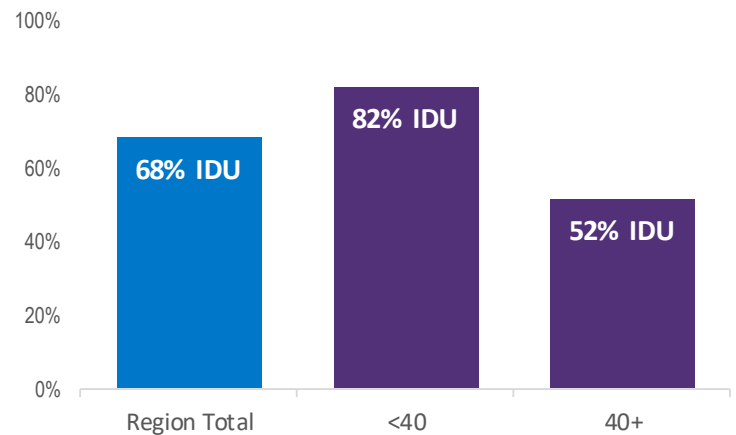
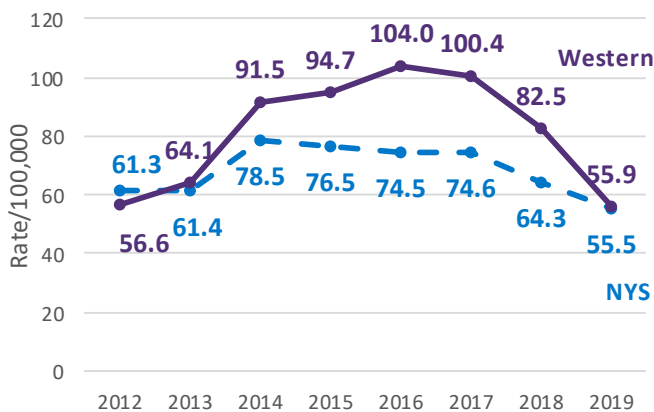
Western Region at a Glance

- 846 new cases²
- Cases decreased 32% since 2018
- Similar case rate to NYS rate
- 62% male
- 46% <40 years of age
- 82% of cases <40 have history of IDU
- 61% of female cases are of childbearing age³

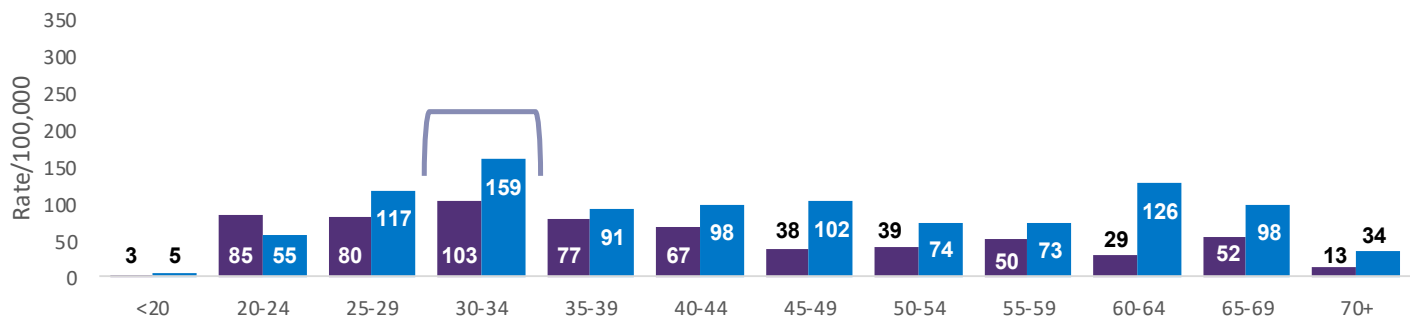


Case rates in the **Western Region**, which previously had been among the highest in the state, have decreased and in 2019 were similar to rates in **New York State (excluding NYC)**.

Injection drug use (IDU) is a major risk factor for hepatitis C. When risk factor information was available, **68% of total** newly reported cases had a history of IDU. IDU was **more common among those <40 years of age** than those 40+.⁵



Hepatitis C case rates per 100,000 in the Western region were highest for **females** and **males** aged 30-34.



Notes. ¹ Reports include both probable and confirmed, chronic, acute and perinatal hepatitis C cases; ² Rates in counties and regions exclude persons incarcerated by the Department of Corrections and Community Supervision ³ Women of childbearing include women age 15 to 44. ⁴ Data includes all counties outside of New York City (Bronx, Kings, Queens, New York, and Richmond Counties). ⁵ Information on IDU was unknown for 69% of all cases. For more information see New York State Department of Health Hepatitis B and C Annual Report 2019 at <https://www.health.ny.gov/statistics/diseases/communicable/>.
Source. Communicable Disease Electronic Surveillance System (CDESS)
Contact. NYSDOH Division of Epidemiology, hepbcc.surveillance@health.ny.gov

